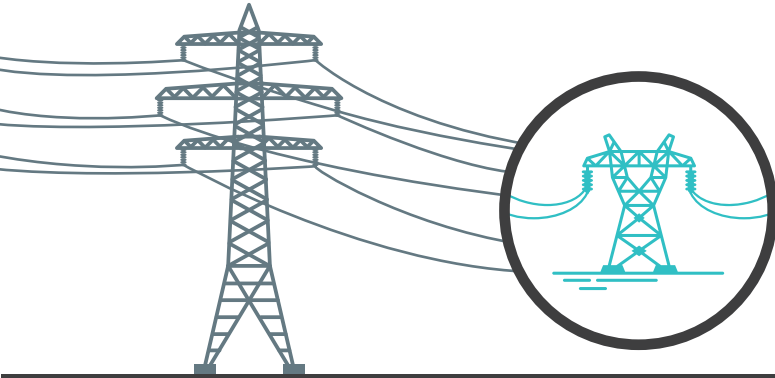


# The Steps to Restoring Power

During emergency restoration with widespread damage, SECO Energy's priority is to restore service for shelters, hospitals, schools and government agencies. Next, SECO crews restore service to the greatest number of people in the shortest time possible – until everyone's electric service is restored.



## 1. High-Voltage Transmission Lines

These lines carry large amounts of electricity. They rarely fail but must be repaired first.



## 2. Distribution Substations

Crews inspect substations, which can serve hundreds or thousands of people.



## 3. Main Distribution Lines

Main lines serve essential facilities like hospitals and larger communities.



## 4. Individual Homes and Businesses

After main line repairs are complete, we repair lines that serve individual homes and businesses.